

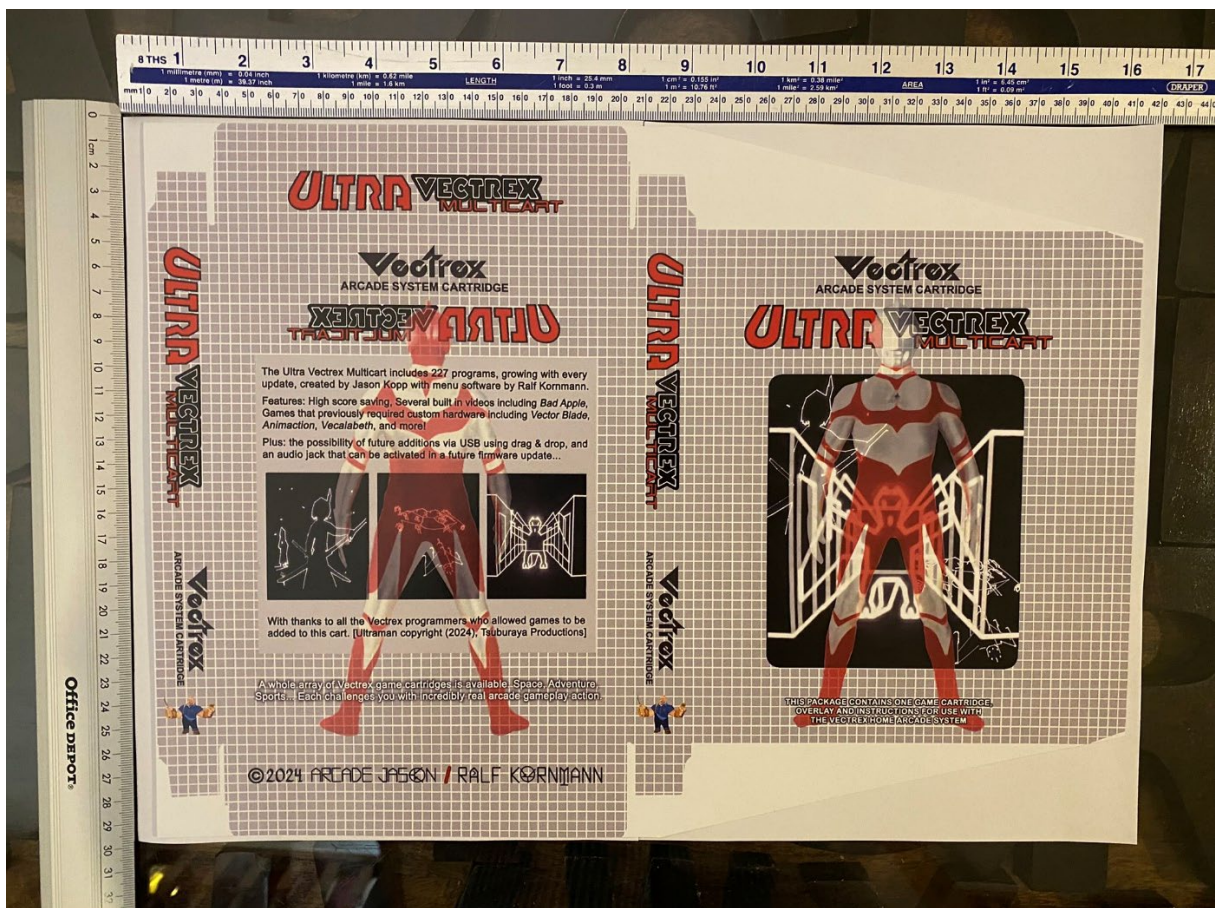
Making a Vectrex game box from a printout

So, you'd like to make a Vectrex box from one of the PDFs in the Vectrex Fans Unite facebook group...

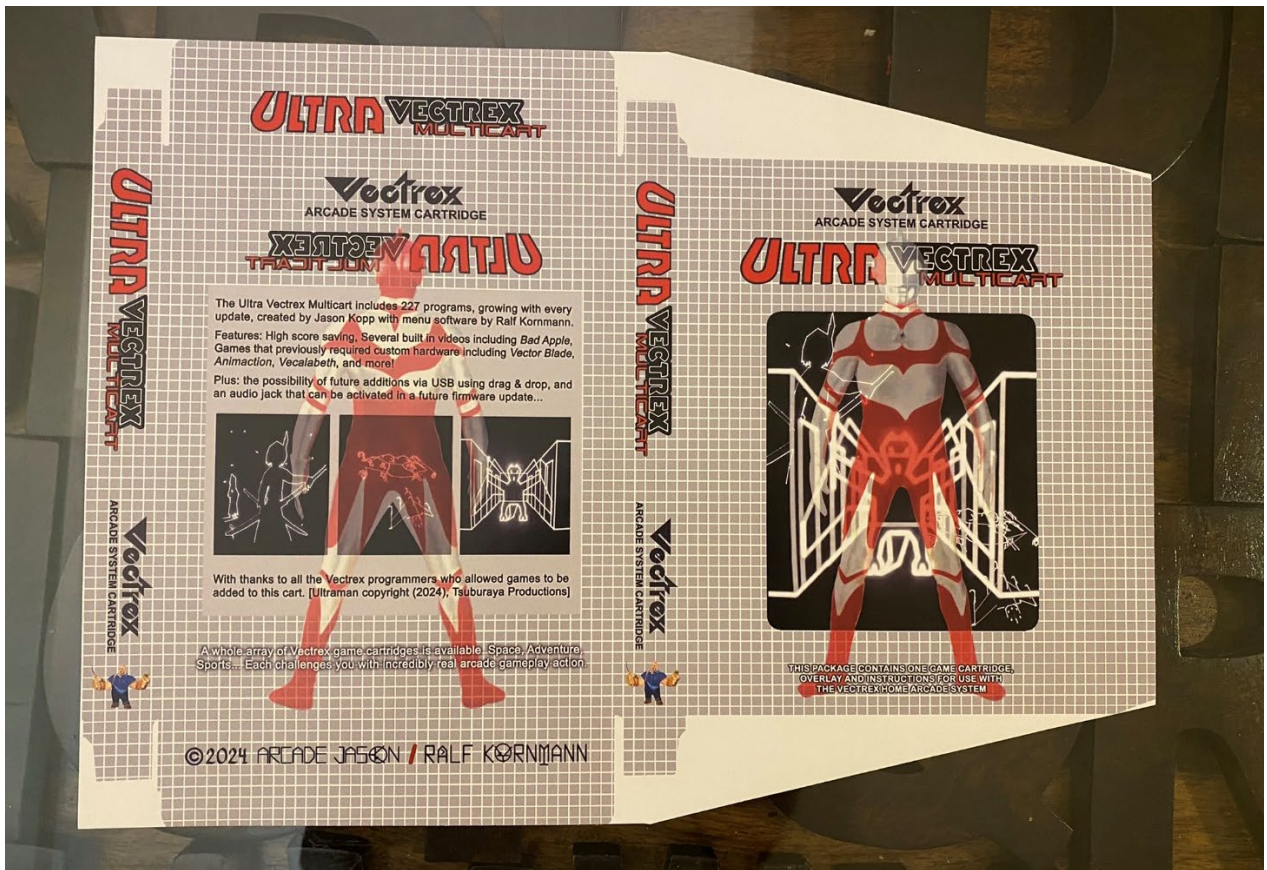
The photos below are based around making a box for the Ultra MultiCart, which you can download here - <https://www.facebook.com/groups/vectrex/permalink/2324059604471070> - but will also work for any of the other box PDFs (please note there is a little variation in size: some are a tighter fit in box protectors than others).

- 1) **Print out the file on 300GSM* card at a print shop. The boxes are designed to fit on UK A3 sized card (29.7cm x 42cm / 11.7 in x 16.5 in), though if the shop has SRA3 (35cm x 45cm / 12.6 x 17.7 in) they may prefer to use that as the vertical dimensions of the design are quite close to the edges, and some places like an image 'bleed' that can be trimmed. *You can go lighter – e.g. 250 / 200GSM, but the thinner the card, the less rigid the box will be.**

In America, the closest sizes you'll find are 'Tabloid' / 'Ledger' (43.2cm x 27.9cm / 11 in x 7 in), which will take you right up to the edges (and require the image to be cropped slightly), but that's fine as the top and bottom edges of the image are flaps that tuck inside the box when opening / closing the top and bottom. However, if possible, use the next size up - Arch B (30.5 cm x 45.7cm / 12 in x 18 in) - which will give you more space around the image, and again keep the print shop happy as the edges of the image won't be affected by bleed parameters. **Make sure the print shop is printing the image 1:1 scale and not 'print to fit' or similar...**

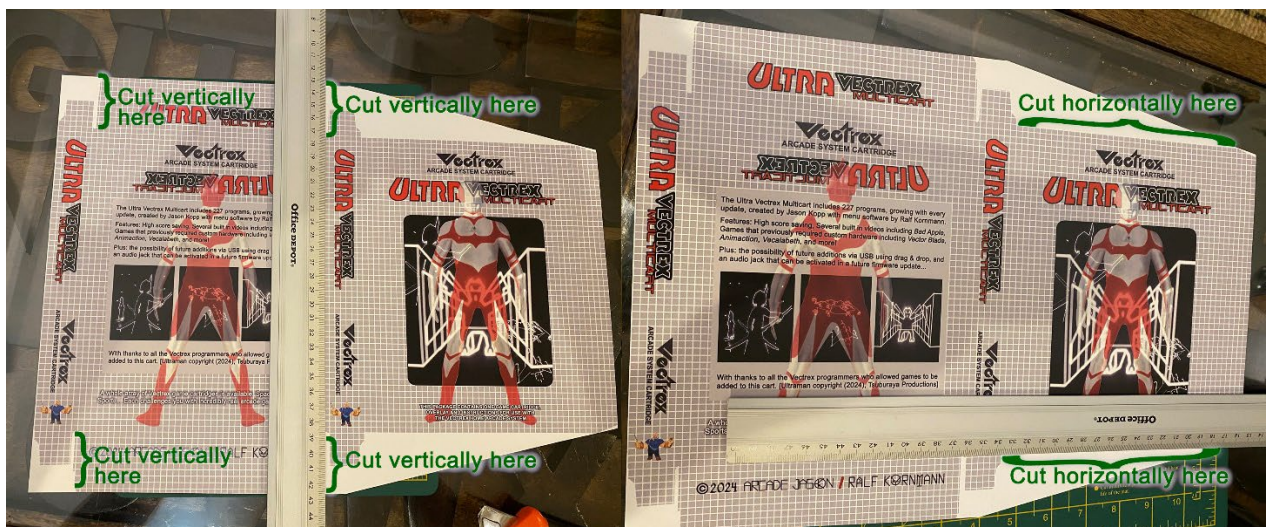


- 2) Using a guillotine / paper trimmer, or craft knife and rule(r), trim to the outside edges of the image, and create a diagonal trim through the unprinted space, so that it looks like this:

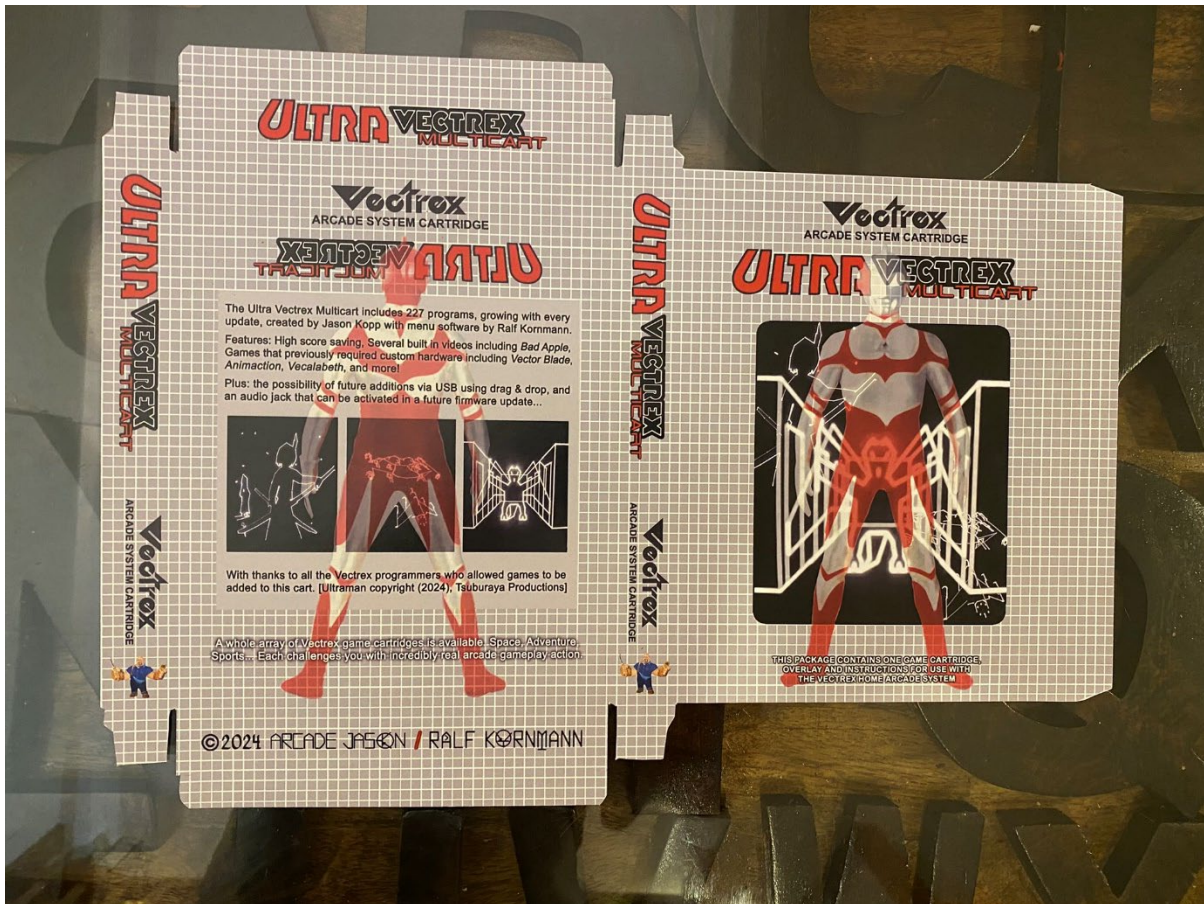


..which will create a sheet that's 41.5cm x 29.5cm / 16.3in x 11.6in (okay if slightly smaller, but if bigger, it won't fit in a box protector)

- 3) Using a craft knife held against the edge of a metal rule(r) with cutting mat (or cardboard, or wood you're happy to ruin) beneath, cut vertical and horizontal lines along the flat edges of the flaps, and top and bottom of the front image.



- 4) ...and cut around the smaller flaps and rounded corners by eye, leaving you with trimmed card, looking like this:

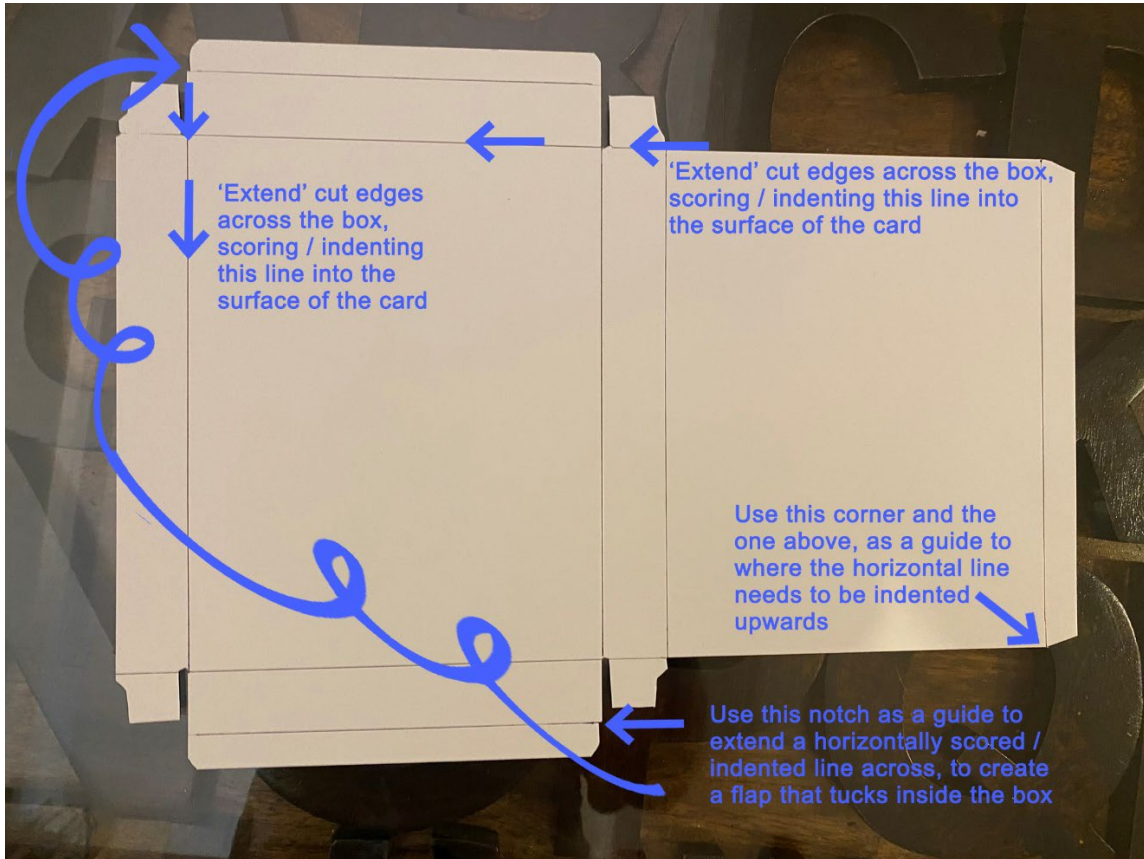


- 5) Flip the card over, and on the rear of the card, you need to score / indent lines that coincide with the vertical edges of flaps, and the horizontals that extend from the edges of the front of the box. To do so, hold the edge of a small 'flat head' screwdriver against your metal rule(r)...

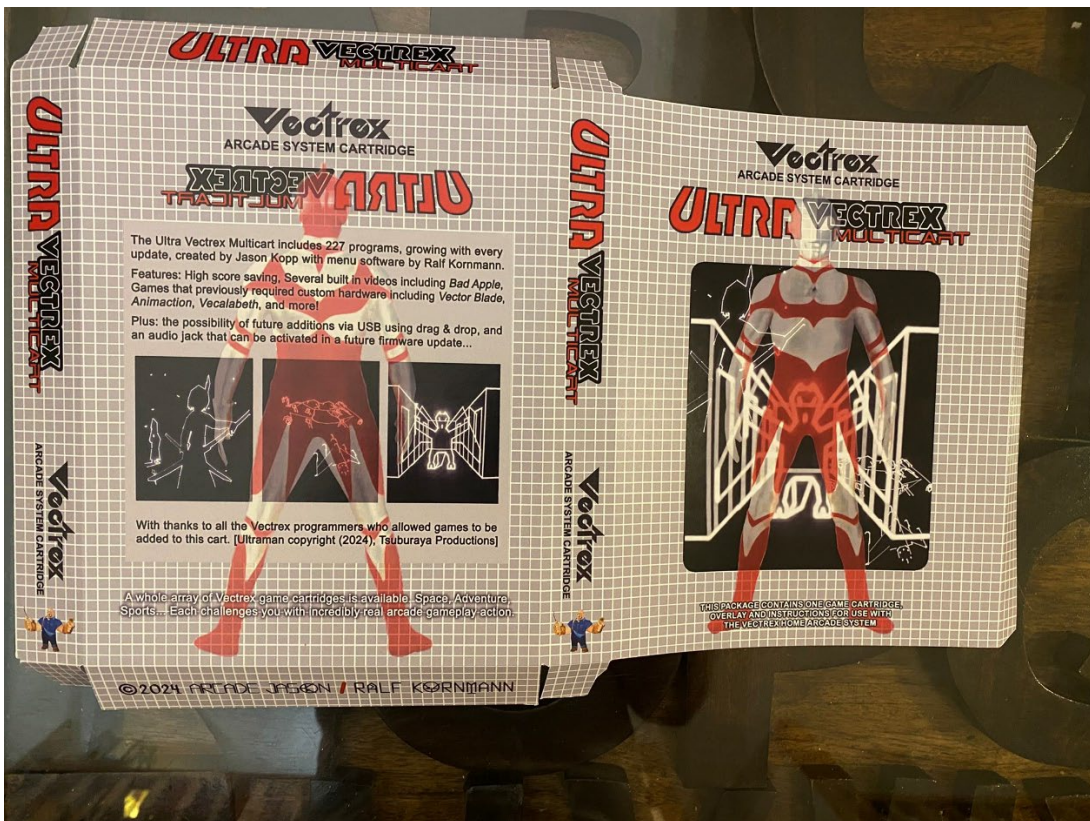
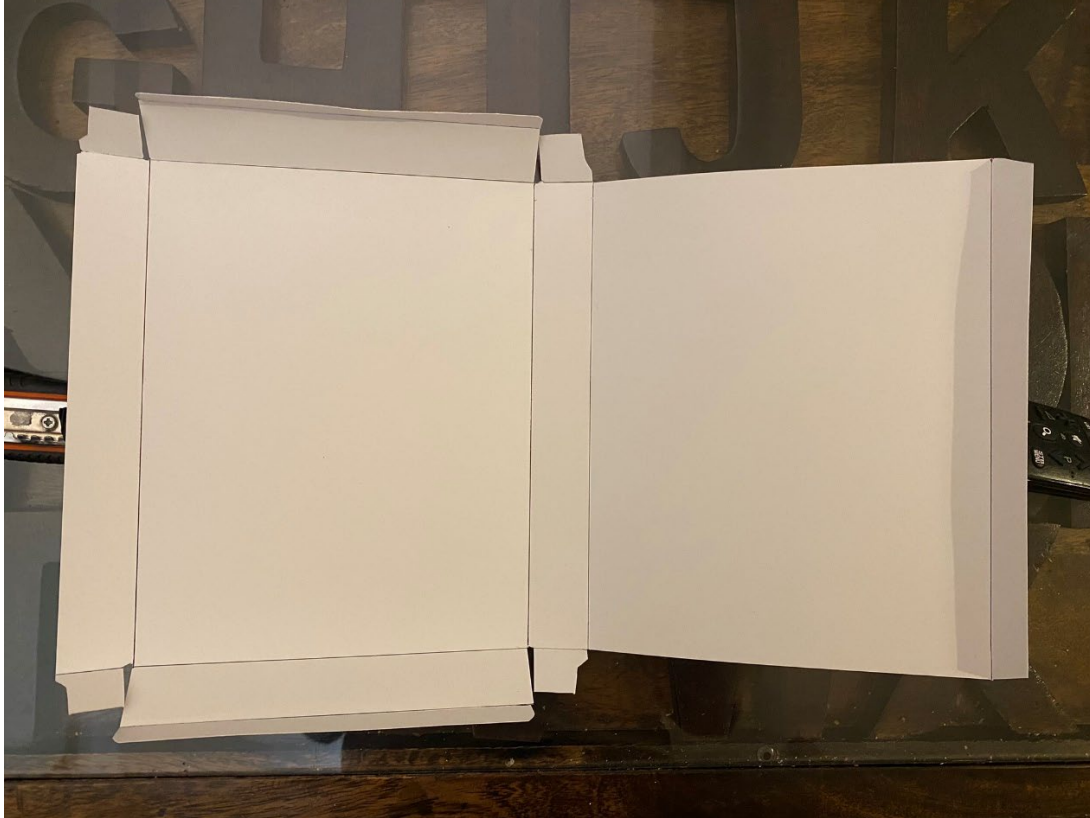


(To demonstrate where the scored / indented lines should be, I've drawn on the back of this box to make it more obvious where these lines are...)

5) Contuned...



6) Fold the edges where you've scored / indented the card, so it starts to look like this:



7) Add double sided Sellotape / Scotch tape or glue to the flap to the right of the front of the box:



8) Fold the box together, so that the glued flap is under the opposite spine and press together – boxes that have the grey check background make it much easier to line up!



9) Fold in all the flaps, and you should now have a box!

